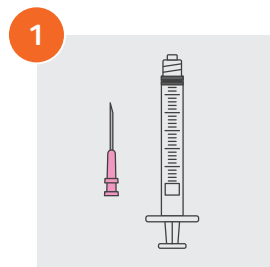


Quick Reference Guide



Vaccine preparation workflow

Always refer to package inserts for detailed instructions when preparing and administering vaccines. In general, follow the steps below:



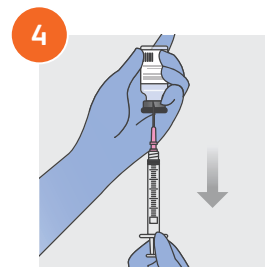
1 Select syringe and needle of proper length



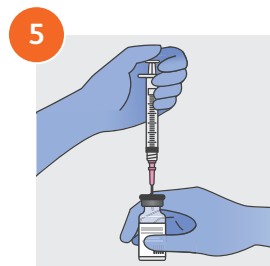
2 Check labels and verify they are the appropriate products



3 Remove cap and wipe each stopper with an alcohol swab



4 Insert needle of syringe into diluent and withdraw contents



5 Inject diluent into lyophilized vaccine



6 Agitate



7 Check the appearance



8 If there is discoloration, lack of resuspension or cannot be mixed, mark as DO NOT USE and contact proper authority



9 If multi-use, note date and time



10 Store within 2-8°C, do not freeze. Use within indicated time



11 Dispose of device and components



Before any patient contact, ensure you have the personal protective equipment (PPE) required by your institution's policies/procedures.

Remember: Follow your institution's policies/procedures for aseptic technique and skin preparation and for safe disposal of all medical waste.

Please consult Instructions for Use on the package or package insert for important safety information. This guide is not intended as a replacement for the detailed information contained in the IFU.